

## VisualAdvisor.com

Authored, designed, constructed, and continue to maintain, create content and manage supplemental course site.

Currently redesigning site using HTML 5.

1998-present

### responsive design

Sizes are dynamic based on individual viewing device; columns self adjust to screen size and orientation. Student gallery examples open as an overlay on individual assignment pages.



Index, course and assignment page; site icons



## Alliance Door Products: Finished Door Packaging

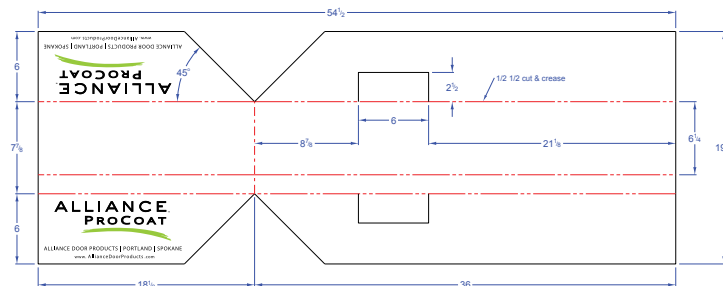
Door shields, corner and leg door packaging. Designed to protect the door and frame finish during shipping to customer and/or construction site.

### size & color

19 7/8" w X 54.5" h; combination of individual parts variable.

Corrugated Cardboard

2017 Fall



detail and digital version



# ALLIANCE PROCOAT

featuring  PRISMA GUARD. Stain

ALLIANCE DOOR PRODUCTS | PORTLAND | SPOKANE  
www.AllianceDoorProducts.com

## Alliance Door Products: Proposed Door Skin Sample Packaging

Proposed packaging, divider cards and individual labels for door color and skin sample packs. Skins divided by standard nine color choices.

### size & color

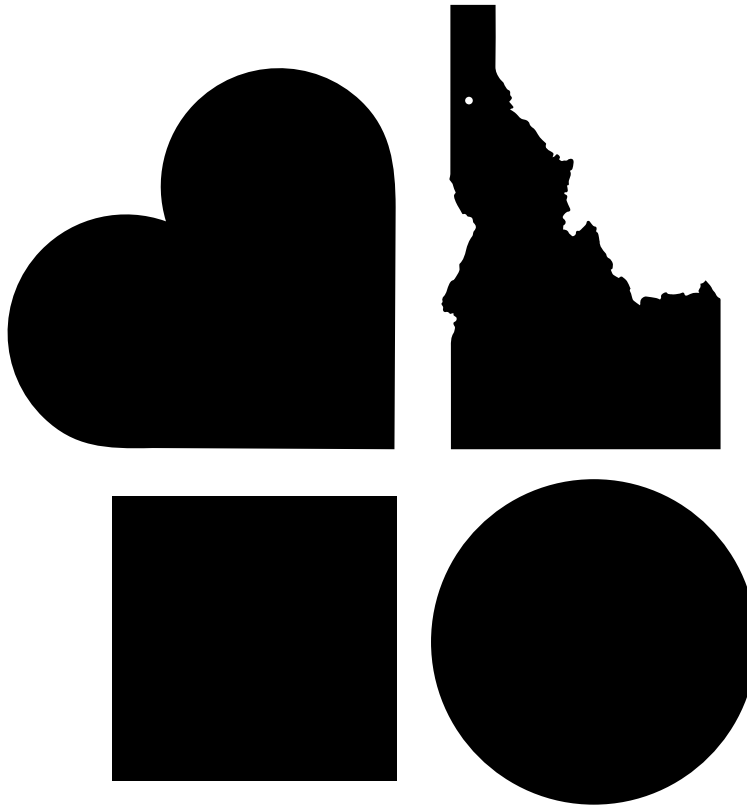
4"w X 4"h individual skin samples; nine different colors and six different skin patterns.

2017 Fall



detail and digital version





## Human Rights Education Institute: Identity Submission

The first concept presented is very graphic, iconic, clean and memorable. The four icons are intended to be used together as a single identity.

The "heart" represents humanity and of course the basic concept of "love, acceptance & understanding".

Idaho State is the next portion which represents "place". I have added a reversed dot within the state to identify your organization's location. *This detail can stay or go, when it is reproduced at a small scale unfortunately it disappears.*

The "square" represents "structure (the building you are physically located in), education and meaning".

The "circle" is important because it is in and of itself "inclusive", never ending; it is also loosely references the globe.

**size & color**  
scalable vector art

**Illustrator**  
2017 Fall



right above: identity submission proposal  
left below: original identity for HREI; <http://hrei.org>



**Human Rights  
Education  
Institute**

01



**Human Rights  
Education Institute**

02



**Human  
Rights  
Education  
Institute**

03



**HR  
E i**

04



05



06



07



08

## Identity with Typography

These are examples of the identity shown with the type applied in a variety of ways. Logos that fit their overall shape within a "square" are fundamentally easier to apply to a variety of reproduction media. One of my goals with this identity was to remain as square as possible.

01 The name fits nicely with the mark in this example in part because the type is on three lines and prevents it from visually traveling to far to the right.

02 Basically the same type application as example number one, however it is on two lines of type.

03 In this example all four of the original icons are present and the name is reversed out of the square.

04 The remaining example has the acronym of the name replacing the square inside the logo.

## Identity Color Palettes

05 Shows some vivid, cheerful colors without being primaries

06 Vibrant earthy colors

07 Muted more sedate versions of our earth palette

08 Very Muted tones with slight undertones of color temperature





mcburns law office

**Elder Law and Estate Planning Professionals**



*Our practice is dedicated to helping seniors and their families plan for the future.*

Probate, Trust and Estate Administration

*Free Initial Consultation*  
**(509) 828-4881**

**www.mcburnslaw.com**  
**1235 N. Post, Spokane WA 99201**

above: new  
Yellowbook

right: Yellowbook  
before



**HOLLAND MCBURNS  
ATTORNEY AT LAW**

*"Free Initial Consultation"*

- Elder Law • Wills
- Trusts • Estate Planning

**(509) 828-4881**

7 South Howard Suite #425, Spokane, WA 99201  
**www.mcburnslaw.com**



mcburns law office



**HOLLAND MCBURNS  
ATTORNEY AT LAW**

*"Free Initial Consultation"*

- Wills
- Trusts
- Estate Planning
- Asset Protection
- Probate

**(509)  
828-4881**

7 South Howard Suite #425  
Spokane, WA 99201  
**www.mcburnslaw.com**



mcburns law office

**McBurns Law Office**

Spokane, WA.

Designed series of Yellowbook print advertisements.

**size & color**

Assorted dimensions and content.

2013-2016



mcburns law office

**Elder Law and Estate Planning Professionals**

1235 N. Post, Spokane WA 99201



*Our practice is dedicated to helping seniors and their families plan for the future.*

Wills, Trusts, Probate, Medicaid, Asset Protection, Guardianship, Special Needs Planning

*Free Initial Consultation*  
**(509) 828-4881 • www.mcburnslaw.com**



mcburns law office

**Elder Law and Estate Planning Professionals**

Holland McBurns



*Our practice is dedicated to helping seniors and their families plan for the future.*

Wills, Trusts, Probate, Medicaid, Asset Protection, Guardianship, Special Needs Planning

*Free Initial Consultation*  
**(509) 828-4881**

**www.mcburnslaw.com**  
**1235 N. Post, Spokane WA 99201**



## McBurns Law Office

Spokane, WA.

Designed client presentation folder, tri-fold brochure, firm's thank you and sympathy cards.

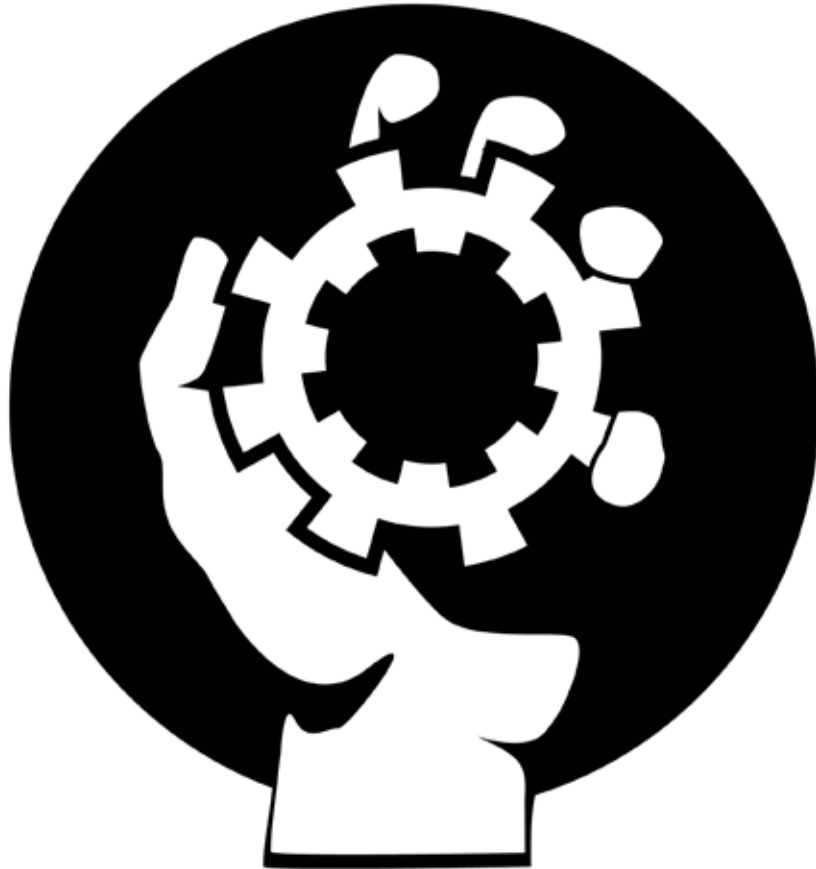
### size & color

Assorted dimensions.

2012-present



detail and digital version



## Justice Fund

San Francisco, CA.

The Justice Fund is a grass roots organization that raises and distributes small grants for local non-profit organizations managed by the population they serve. For example an organization for "newly immigrated Latina single mothers" that is managed and run by "newly immigrated Latina single mothers".

**size & color**  
scalable vector art

**Illustrator**  
2011



## Café Commons

San Francisco, CA

Logo, gift certificates & menu board

Client requested a "spoon" be integrated into their logo.

**size & color**  
scalable vector art

**Illustrator**  
2004



embroidered aprons



## Bone-O-Fido

Spokane, WA

Identity for gourmet dog biscuit company.

### size & color

scalable vector art

2001



Stationery and business card



## Half Rack

San Francisco, CA.  
fine art show announcement

**size & color**  
4" x 6"

**Illustrator and Photoshop**  
2005

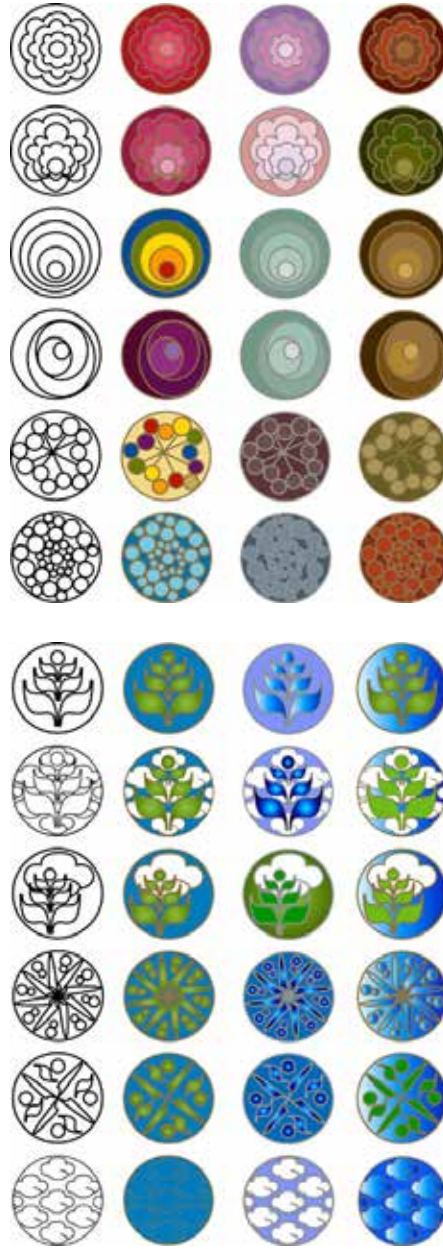
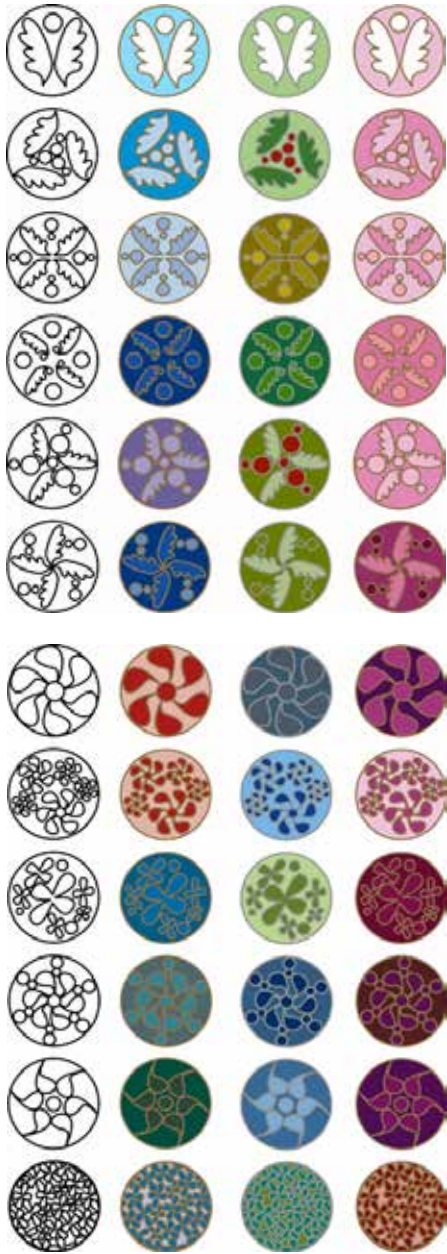
THE DRUGSTORE GALLERY PRESENTS  
new work by  
david overstreet

*Half*  
rack

09.16.2005-10.19.2005  
**ART OPENING PARTY**  
09.23.2005 friday 6:30-9:30 pm

 **VINTAGE DECOR & MORE**  
open 12-7 everyday  
415 282 0544

3149 MISSION STREET SAN FRANCISCO, CA 94110  
THE DRUGSTORE, VINTAGE DECOR & MORE, IS A COLLECTIVE OF DEALERS  
SPECIALIZING IN VINTAGE HOME DECOR, FURNITURE, COLLECTIBLES,  
EPHEMERA, CLOTHING, LINENS AND JEWELRY AT AFFORDABLE PRICES.



## Rare Earth Imports

San Francisco, CA.

12 week freelance contract; cloisonné knob design, image manipulation & branding

**size & color**  
scalable vector art

**Illustrator**  
2004



**Muscular Dystrophy Association  
Spring Festival**

Spokane, WA

Logo, event signage, brochure and  
branded wine glasses. Annual wine and  
beer tasting benefit

Wine glasses were printed in reverse so  
you would see the identity correctly when  
drinking from the glass.

1997 & 1998







## “b” restaurant

Walla Walla, WA

identity concept, logo and interior design

“b bold, b pure, b present”...Assorted words that were intended to follow the name of the restaurant.

River rocks stamped with the logo were given out during the opening of the restaurant

found objects with vinyl lettering

1997



interior stage and two window details