

due date:

Name:

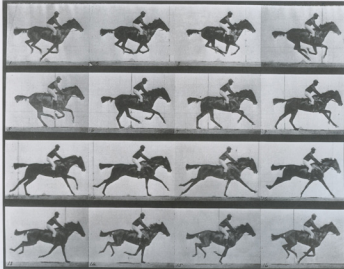
Class **M · T · W · R · F** ampm



ex : Chronophotography & evaluation sheet

grade scale & percent 100% / 10 pts

>A	A-	B+	B	B-	C+	C	C-	D+	D	D-	<F
96%	90	87	84	80	77	74	70	67	64	60	<59%



overview

Student's will create an animated .gif following the example of photographer *Eadweard Muybridge*.

<http://www.biography.com/people/eadweard-muybridge-9419513>

requirements

specifications:

- » 16 frames (minimum and continuous loop)
The first frame will also be the last frame. This will create the illusion of a continuous event (not ending).
- » naming convention: *exChrono_term+year_lastName+FirstInitial*

Size & Color:

- » color and/or b&w
- » overall proportion will be 400px X 600px

technical / digital literacy 40% / 4 pts

3.8	3.4	3.0	2.6	2.4	Media Literacy: Students will demonstrate media literacy with the required construction and output of their digital files. Shows understanding and quality of process; correct output and processes. This is specific to each medium; digital file construction of an animated gif.
-----	-----	-----	-----	-----	--

minimum requirements / specifications 60% / 6 pts (2 pts each)

6	4	2	Physical & Craft: Overall quality of physical presentation. Minimum assignment requirements, correct print size, number of colors, cover sheet, name tag, mounting requirements, etc. This includes and is not limited to NAMING YOUR DIGITAL FILE CORRECTLY .
			<input type="checkbox"/> 16 frames, minimum
			<input type="checkbox"/> 400px X 600px
			<input type="checkbox"/> continuous loop
-1			<input type="checkbox"/> Late: -10% (Excused)
-2.5			<input type="checkbox"/> Late: -25% (Unexcused)
			<input type="checkbox"/> Incomplete; does not meet minimum requirements

Letter Grade	Definition
A	Student work demonstrates consistently excellent scholastic performance; thorough comprehension; ability to correlate the material with other ideas, to communicate and to deal effectively with course concepts and new material; exceptional reliability in attendance and attention to assignments.
B	Student work demonstrates superior scholastic performance overall, above average knowledge of subject matter, and attention to assignments; may demonstrate excellence but be less consistent than the work of an A student.
C	Student work demonstrates satisfactory performance overall, as well as reliable knowledge of subject matter, and attention to assignments. All minimum assignment requirements have been met by the student.
D	Student work demonstrates minimal, barely passing performance and comprehension overall; limited knowledge of subject matter.
F	Student work demonstrates unsatisfactory performance and comprehension or unfulfilled requirements. The grade is failing. (Often times this student will miss many class sessions.)